

KOREA  
TOURISM  
ORGANIZATION



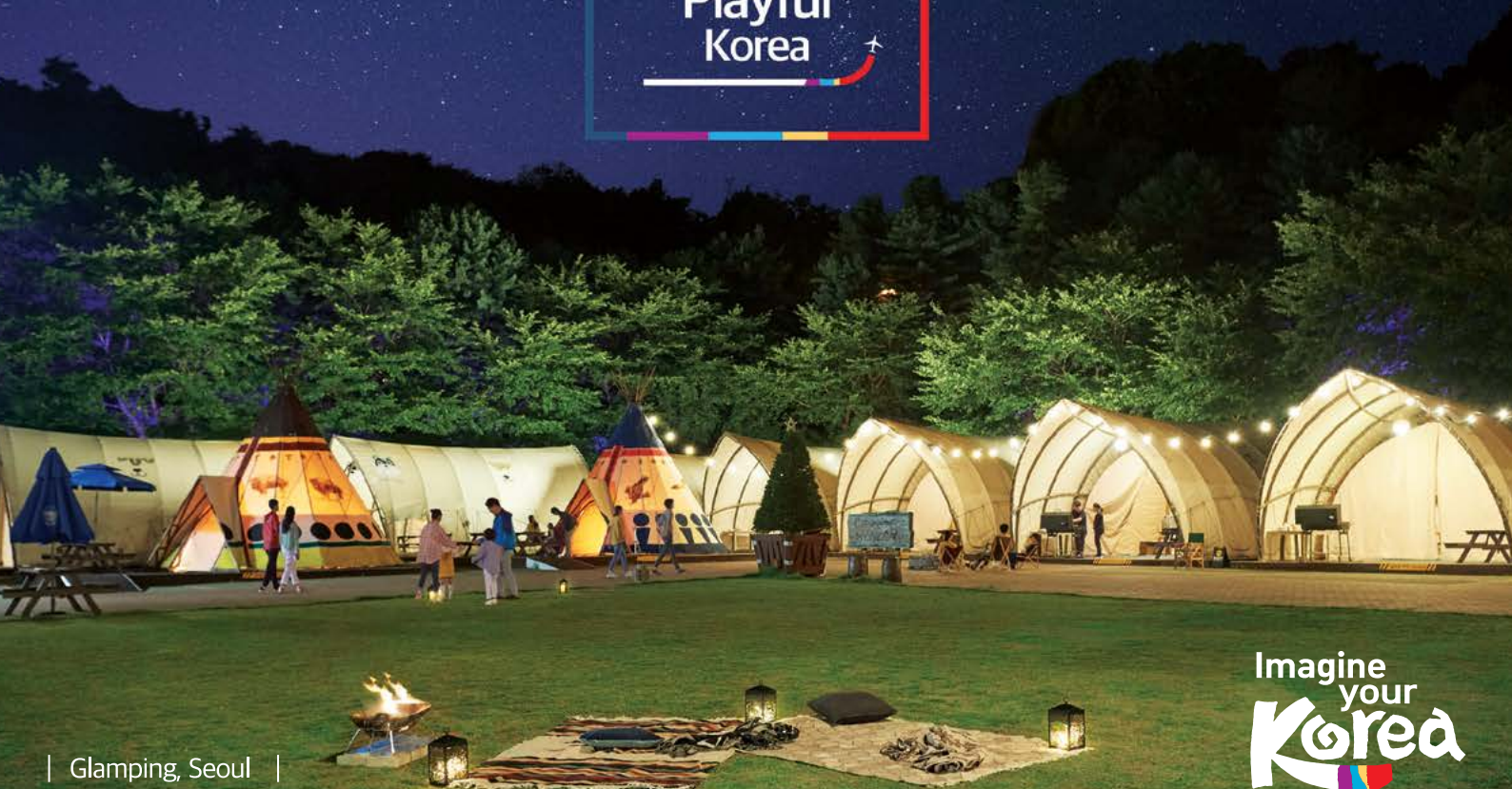
# Little Day Out's Family-friendly Guide to Korea with Kids







You  
×  
Playful  
Korea



# Contents

**04** General Korea Travel Info

**06** Seoul Highlights

**08** Theme Parks

**10** Family-friendly Attractions in Seoul

**16** Family-friendly Activities

**18** Dining in Korea

**19** Types of Korean Cuisine

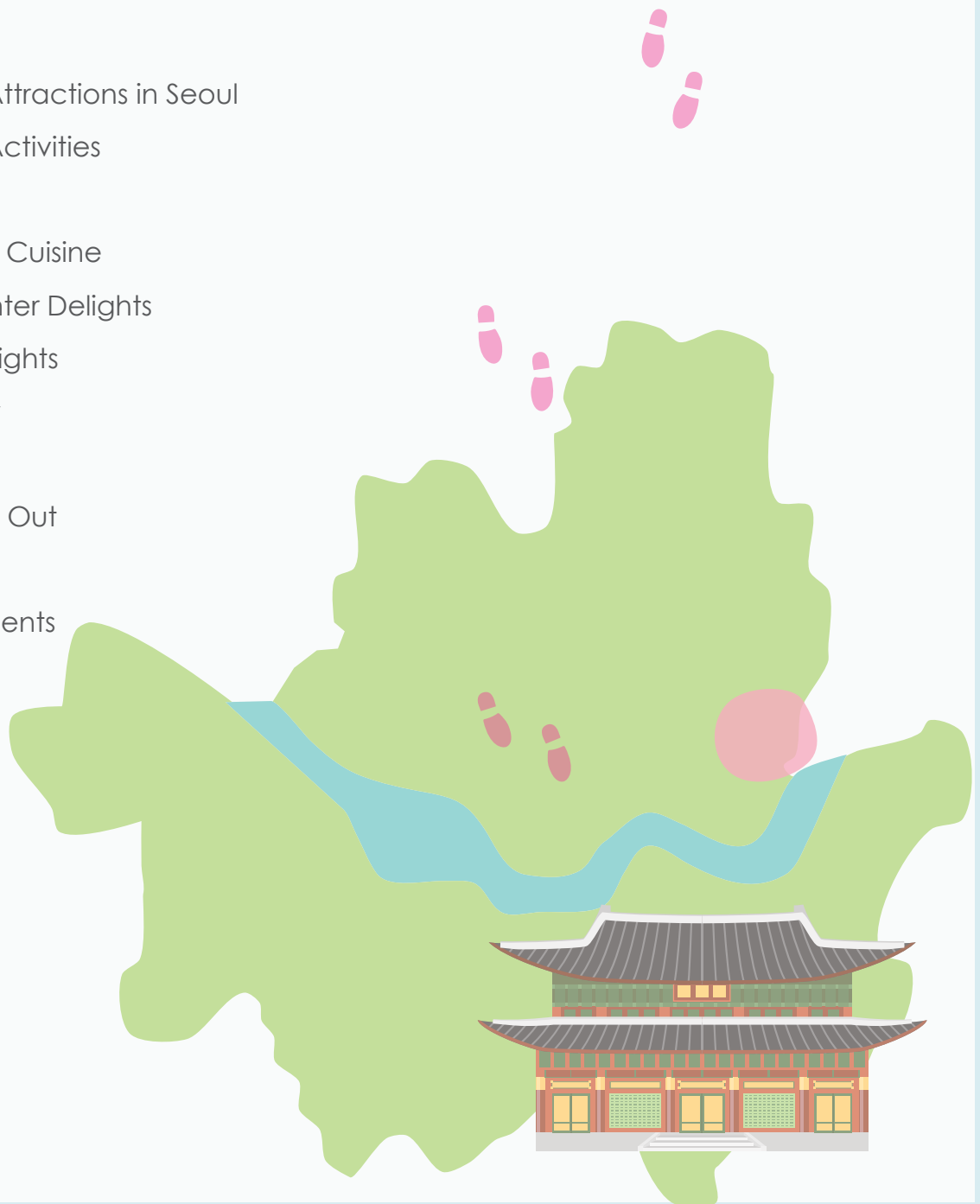
**20** Ski Resorts & Winter Delights

**22** Jeju Island Highlights

**24** Sample Itinerary

**26** About Little Day Out

**27** Acknowledgements





# General Korea Travel Info

**South Korea** is an incredible destination. With a mix of cultural sights and quirky experiences, it is an amazingly family-friendly destination. Cute themed attractions, a vibrant shopping scene, natural wonders and mouth-watering food mean that it is hard to go wrong on a family holiday to South Korea with kids.

Currency: Korean won  
Language: Korean, English



## Korea has four distinct seasons.

Spring falls between mid-March and May. This is cherry blossom season and one of the most popular periods of the year to visit South Korea. Temperatures range from 8°C to 22°C in the daytime.



Summers, from June to August, are generally hot and wet as it coincides with the monsoon rains. Average summertime temperatures can reach 27°C to 31°C.



Autumns are mild with the country covered in shades of orange and red. This makes September to November a popular time with visitors. Daytime temperatures in autumn decline from around 26°C to 11°C by November.

Winter season takes place from December to March. Crisp white snow makes it a good time for those who wish to experience winter activities. Temperatures in the day hover between 0°C to 3°C.



Time: South Korea Time  
(KST) is GMT + 9h.



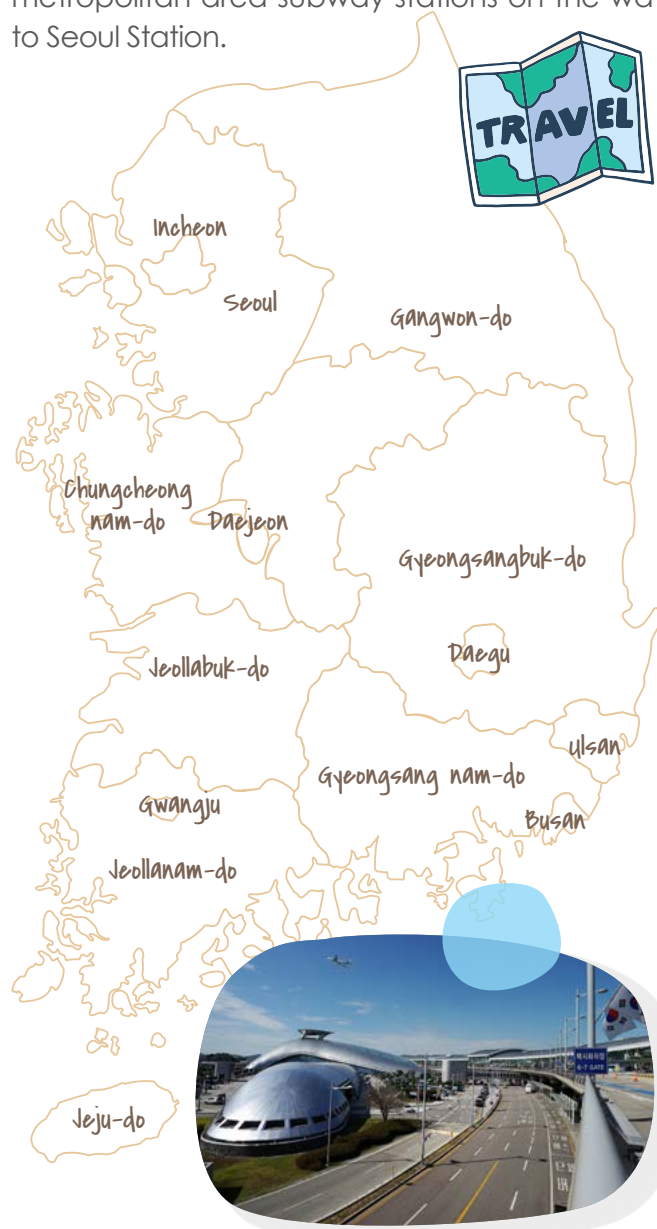


## Arriving in Korea

Most visitors to Seoul will arrive at Incheon International Airport, South Korea's largest airport. It is located 48 km west of Seoul. There are also direct flights between Singapore and Busan so you can visit the southern part of Korea easily.

**Getting from Incheon International Airport to Seoul:** There are convenient transport connections available.

Airport Railroad Express (AREX) operates both Express and All Stop (Local) Trains from the airport to Seoul. Express Trains take you from Incheon International Airport Terminals 1 and 2 directly to Seoul Station in around 50 minutes. The All Stop train service makes scheduled stops at metropolitan area subway stations on the way to Seoul Station.



Airport Bus services run between Incheon International Airport and different locations within Seoul. Check the bus service to your destination and purchase tickets at the ticketing counters located at the Terminal 1 Arrival Hall or outdoor Transportation Center at Terminal 2. Once on board, listen to the English announcement for your stop.

An Incheon International Airport Bus Guide is available online at the Incheon International Airport [website](#).

## Getting around Seoul

Seoul is a big city. Thankfully, its world-class public transport network makes it easy to explore the city's many sights, even with kids in tow. Seoul's extensive Metro system will be able to easily get you to the major attractions and districts in the city.

T-money Card is Seoul's reloadable transportation card which can be used on both the subway and buses. Tourists can purchase a Seoul CityPass, available in one, two and three-day options at the airport and most convenience stores.

Children 5 and under get to travel free of charge on the Seoul subway. Children 6 to 12 enjoy discounted fares.

### Emergency Services:

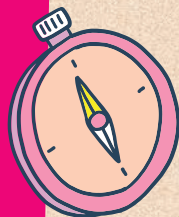
If in need of emergency assistance, call 119.

## 1330 Korea Travel Hotline

Many travellers to South Korea worry about the language barrier. The 24-hour 1330 Korea Travel Hotline, operated by Korea Tourism Organization, is a sign of how serious South Korea is at welcoming visitors. Need help getting around or need interpretation services? Call the hotline which offers assistance in Korean, English, Japanese, Chinese, Russian, Vietnamese, Thai and Malay.

# Seoul Highlights

It is easy to get overwhelmed by Seoul's many districts and countless attractions. Here is a rundown of its major neighbourhoods and sights.



As the capital of South Korea, Seoul is a large metropolis where modernity and old traditions sit comfortably side-by-side.

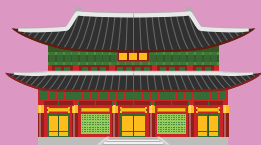
The Han river runs through the city, separating it into districts north and south of the river.

## North of the River

**Dongdaemun** is a popular district which attracts tourists with its shopping and fashion. Explore modern shopping malls at Dongdaemun Fashion Town, soak in the bustle of the night market or enjoy the tranquillity of Cheonggyecheon, a revitalised stream.



**Itaewon** is known for its nightlife and up-market dining. Attractions here include the National Museum of Korea and War Memorial of Korea museum.



**Myeongdong** where you will find Namsan, one of the four guardian mountains of Seoul. On its northern slopes is the Namsangol Hanok Village and at the top is the iconic N Seoul Tower. Close to Myeongdong is Namdaemun Market, the largest traditional market in Korea with food and retail stalls.


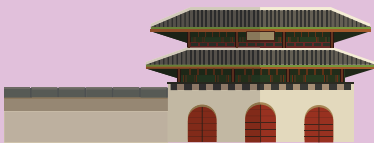




# Seoul



**Jongno-gu**, in northern Seoul, attracts droves of visitors with historic landmarks. These include the Gwanghwamun gate, Gyeongbokgung Palace and Changdeokgung Palace. Between the two royal palaces lies Bukchon Hanok Village, a neighbourhood with traditional Korean houses that is popular with tourists.

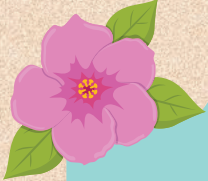


**Insadong** is where you will find a mix of cultural experiences which include traditional restaurants and teahouses, alongside artistic galleries. An Insadong landmark is the spiralling Ssamziegil mall and the district is also home to unique attractions like the Alive Museum, Museum Kimchikan, Beautiful Tea Museum and hilarious Poopoo Land!



North of the River

South of the River



**Gangnam** has a reputation for wealth, upmarket living and high real estate prices ("Gangnam Style"). Its skyscrapers are swanky addresses for high-powered financial and tech companies. COEX Mall, one of the largest underground shopping malls in Asia, and the COEX Aquarium are some of the attractions here.

A few of subway stops from Gangnam is Jamsil, home to South Korea's tallest building, the 123-storey Lotte World Tower and the Lotte World amusement park.





# Theme Parks



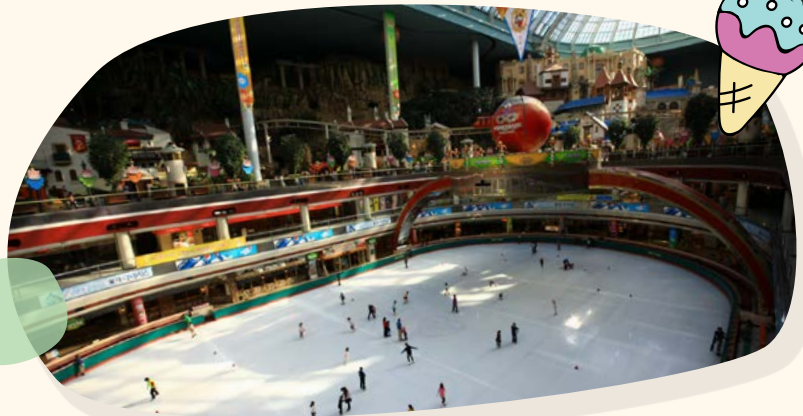
## Lotte World Adventure & Magic Island

A day at the theme park is sure to be a hit with kids. Go on rides, enjoy the amusements and escape to a world of fun and fantasy.

South Korea has many theme parks and don't be surprised to find water parks, amusement parks and even zoos close to each other. A day out to South Korea's theme parks is a treat that kids won't soon forget.

Lotte World is a colossal entertainment complex in Jamsil with shopping, restaurants and even an aquarium. The indoor theme park, Lotte World Adventure, covers four floors and caters to all ages, from the youngest children to seasoned thrill seekers. At the outdoor Magic Island, there are even more exhilarating attractions like Gyro Swing and Atlantis. A Folk Museum adds an educational spin with dioramas of traditional village life from ancient times.

Those who wish to make a splash can do so at Lotte Water Park where you can spend a full day of fun on the water slides and rides, including Korea's longest water coaster.





## Seoul Land

About an hour south from downtown, Seoul Land first opened ahead of the 1988 Olympics. It has five theme zones with around 50 rides and attractions. Less crowded than Lotte World and Everland, kids will still be able to appreciate the attractions such as bumper cars, fun houses and roller coasters at the park. In the winter months, it even offers snow sledding.

Seoul Land is located at Seoul Grand Park which has attractions such as a zoo, botanical gardens and the National Museum of Modern and Contemporary Art.



## Onemount

There's no need to wait for winter to experience snow in Seoul. Onemount Snow Park has snowfall and sledding 365 days a year. Visit Santa's Village, snow-covered slopes and a snow slide that the kids can enjoy. Don't forget to take the dog sled ride around the winter-themed wonderland.

Head over to Onemount Water Park for some wet and wild fun at its indoor and outdoor slides, surf wave pool and aqua play area.

Onemount is about 25 km northwest of Seoul.

# Family-friendly Attractions in Seoul



Seoul is an amazing city to explore with kids. There are plenty of family-friendly attractions and it is a good idea to intersperse cultural sights and shopping plans with kid-friendly activities so that everyone in the family gets to enjoy what Seoul has to offer.

Here are some family-friendly attractions you can visit around Seoul.



## Children's Folk Museum, National Folk Museum of Korea

Chances are you will visit the awe-inspiring Gyeongbokgung Palace while in Seoul. Located within the palace grounds is the National Folk Museum of Korea which operates a Children's Museum. Catering to young children, the museum features kid-friendly, hands-on exhibits based on Korean folk history.

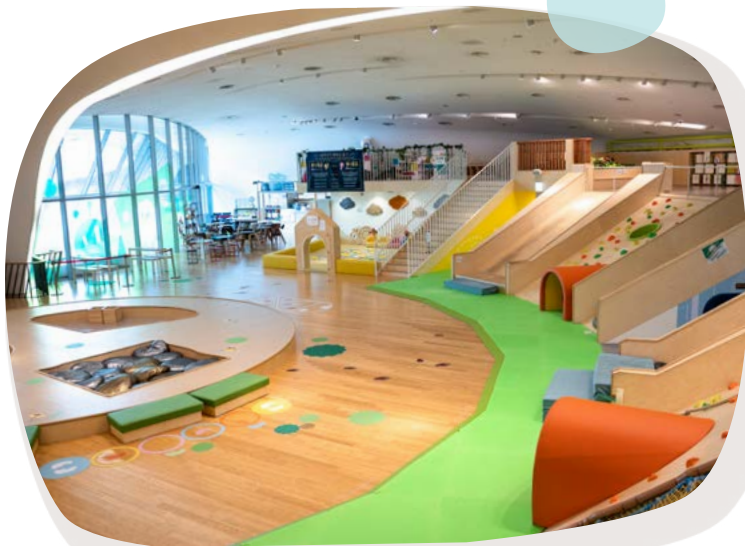
**District:** Jongno-gu

**Address:** 37 Samcheong-ro,  
Jongno-gu, Seoul

[kidsnfm.go.kr](http://kidsnfm.go.kr)







## Dikidiki Design Sense Playground

Conceptualised as a design playground for children in the digital age, Dikidiki is a creative space for kids to engage in sensory play. It is located within the Dongdaemun Design Plaza.

**District:** Dongdaemun

**Address:** 281, Eulji-ro,  
Jung-gu, Seoul

[ddp.or.kr](http://ddp.or.kr)

## Tongin Market

Explore a street market and sample Korean street food at Tongin Market. Purchase a bento box and some old-style brass coins that can be used to buy food from the stalls. Let the kids have a field day assembling their own meal.

**District:** Jongno-gu

**Address:** 18, Jahamun-ro 15-gil,  
Jongno-gu, Seoul

[tonginmarket.co.kr](http://tonginmarket.co.kr)



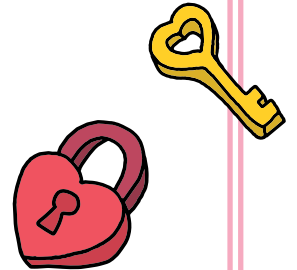


## N Seoul Tower

N Seoul Tower is an unmistakable city landmark. It is best reached by bus or a scenic cable car ride. Head up to the Observatory (or make a reservation at one of the tower top restaurants) for an unforgettable view of the city. Hello Kitty fans will also want to visit Hello Kitty Island, a pink homage to the Sanrio character found at the lower floors of N Seoul Tower.

District: Myeongdong  
Address: 105 Namsangongwon-gil,  
Yongsan-gu, Seoul

[nseoultower.co.kr](http://nseoultower.co.kr)



## Seoul Animation Center

Enter the world of colourful characters and discover the magic behind cartoons at Seoul Animation Center. Kids can try digitally drawing Pororo or creating their own stop motion animated story here.

District: Myeongdong  
Address: 48 Sogong-ro,  
Jung-gu, Seoul

[ani.seoul.kr](http://ani.seoul.kr)







## The War Memorial of Korea

A war museum may be a strange place to visit with kids but The War Memorial of Korea is surprisingly kid-friendly. It has a dedicated Children's Museum that engages kids on the topic of war and peace. Children will also be fascinated by the display of military hardware at the front of the museum.

District: Itaewon  
Address: 29 Itaewon-ro,  
YongSan-gu, Seoul

[warmemo.or.kr](http://warmemo.or.kr)



## Samsung d'light

Experience the future at Samsung's digital exhibition hall. The interactive gallery shows off the Korean tech giant's latest wizardry and gives a glimpse into how they are shaping the future. Pick up a wristband from the first floor before proceeding on to experience the digital future. It is a digital playground that will delight kids and adults alike.

District: Gangnam  
Address: 11, Seocho-Daero  
74-Gil, Seocho-gu, Seoul

[samsungdlight.com](http://samsungdlight.com)





## Children's Grand Park & Seoul Children's Museum

**Children's Grand Park** (not to be confused with Seoul Grand Park) is a public park with attractions designed especially for kids. On its verdant grounds are amusement rides, a zoo, musical fountains and outdoor playgrounds. **Seoul Children's Museum** is also located within the park and has creative exhibits and play spaces for children and families.

District: Gwangjin-gu  
(South of Dongdaemun)  
Address: 216 Neungdong-ro,  
Gwangjin-gu, Seoul

[seoulchildrensmuseum.org](http://seoulchildrensmuseum.org)



## Animal Cafés

Let your children pet and feed some sheep in the heart of the city. Visit **Thanks Nature Café**, a sheep cafe in Seoul, Hongdae, while you enjoy sheep-inspired desserts and drinks.

Check out also the raccoon café named **Blind Alley Coffee Shop** with cute animals, thick toasts and delicious Korean lattes and smoothies.

District: Hongdae  
Address: 340-15 Seogyo-dong,  
Mapo-gu, Hongdae, Seoul

[instagram.com/thanks\\_nature\\_cafe/](https://www.instagram.com/thanks_nature_cafe/)

District: Yongsan-gu  
Address: 376 Cheongpa-ro 47-gil,  
Cheongpadong 2(i)-ga, Yongsan-gu

[facebook.com/pages/Blind-Alley/275901775761152](https://www.facebook.com/pages/Blind-Alley/275901775761152)





## Explore Hangang (Han River)

The Han River offers a recreational space where you can take a break from the bustle of the big city. Yeouido Hangang Park on the south bank of the river is a good starting point. Rent a bike and embark on a two-wheeled exploration of Seoul's waterway. The park is also a popular spot for viewing the cherry blossoms in Spring. For another view of the river, book a cruise along the river. The Han River Cruise, which operates themed fireworks and music cruises in addition to daytime cruises, departs from Yeouido Park wharf.

[Hangang.seoul.go.kr](http://Hangang.seoul.go.kr)

[elandcruise.com](http://elandcruise.com)



## Kids Cafés



No, kids cafés are not for children to get a hot beverage and slice of cake. Instead, they are indoor playgrounds where young children get to play while adults can choose to sit down for that slice of cake!

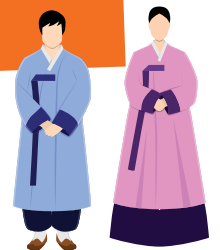
Many kids cafés are themed after popular children's characters and have multiple branches in Seoul and around South Korea. Jamsil Lotte World has **Pororo Park** and **Super Wings** kids cafés. **Tayo the Bus** kids cafés can be found around Seoul and in other cities too.

The kids café with the best view is **Play in Museum (PIM)**. It occupies Solvit island in the Han River.

# Family-friendly Activities



Family-friendly activities provide a chance to make some lasting family holiday memories together. Here are some of family-friendly experiences in Seoul.



## Hanbok Experience

Hanbok is the traditional dress of the Korean people. It is worn by both men and women and consists of a fitted jacket with trousers for men and a skirt for women. Renting a hanbok is a fun way to embrace Korean culture. The entire family can dress in colourful attire and imagine you have all been transported back in time.

Hanbok rental shops can be found near attractions like Gyeongbokgung Palace and Insadong. Rent a hanbok for a couple of hours and visit the attractions. Just remember your identification and cash to place a deposit.

Wearing a hanbok is a great opportunity for some amazing photos. You will find many people dressed in hanbok exploring picturesque locations like Bukchon Hanok Village.

Visitors wearing hanbok even enjoy free entry to Seoul's five traditional palaces, which are perfect locations for beautiful family photos.





## Family-friendly Shows

Language is no barrier at some of Korea's most exhilarating performances. Combining music and motion, shows like Cookin' NANTA and JUMP provide a high-energy entertaining experience for families.

At the non-verbal Cookin' NANTA show, watch as performers get up to outrageous antics in the kitchen with a mixture of acrobatics, comedy and percussive beats. You will never look at a ladle the same way again.

JUMP takes place in the average Korean home and features a whacky storyline and displays of martial arts, acrobatic skill and unadulterated slapstick humour.



Be entertained by the high-action, non-verbal comedy performance, Fireman, at Myeongbo Art Hall. Laugh at the antics of the talented cast and their displays of physical comedy, dancing and parkour. Don't forget to take pictures with your favourite cast members after the show.



## Strawberry Picking

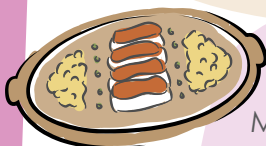
South Korea is known for its luscious strawberries. If visiting between December and June, strawberry picking is a family-friendly activity that kids will enjoy. Pick bright red strawberries straight from the strawberry patch. You may also be able to make them into chocolate strawberries or cook up a jar of jam to bring home!

# Dining in Korea

Hansik is traditional Korean cuisine. It is based on rice with meat or fish, a spread of side dishes and soup. The cuisine also includes fermented foods such as kimchi (fermented cabbage), doenjang (soybean paste) and gochujang (chili paste).



The epitome of Korean dining is hanjeongsik, a banquet-style meal where the table is covered with dishes. Other Korean restaurants will often specialise in one particularly type of dish, such as barbeque or stews.



## Barbeque Restaurants

Many Korean barbeque restaurants have grills integrated into the tables. Sit down and cook beef (bulgogi), beef ribs (galbi), chicken (dak) and pork (samgyeopsal) on the grill. The meats are usually wrapped up in a leaf of lettuce and a dash of seasoning sauces.



To sample street food, head to Insadong, Myeongdong and the street markets at Dongdaemun and Namdaemun. For a traditional Korean street food experience, check out Jongno Pojangmacha Street and Gwangjang Market.

There are also many international restaurants, cafes and bakery chains all around Seoul.

## Jongno Pojangmacha Street



## Gwangjang Market







### Bibimbap

Bibimbap is a rice bowl with a neatly arranged layer of meat, vegetables and a fried egg on top. Mix the ingredients well together and tuck in. It usually gets served with a dollop of gochujang but, if you don't mix that in, it is a rice dish which kids (or those who don't enjoy spice) will enjoy tucking into.



### Kalguksu

These knife-cut noodles served in a steaming bowl is a savoury delight. Non-spicy and satisfying, these thin flat noodles come in various flavoured broths including chicken and seafood.



### Samgyetang (Ginseng Chicken Soup)

Known for its nutritional goodness, samgyetang is a hearty, traditional broth made with chicken stuffed with garlic, rice, ginseng and spices.



### Gimbap

This tasty snack is made with rice rolled up in dried seaweed. At the centre are ingredients like radish, egg, ham and carrot.

### Hotteok

A chewy pancake, usually stuffed with sugar and walnuts or pine nuts, vegetables or cheese, Hotteok is a popular street food during wintertime. If you see them in green, it means green tea powder has been added to it.



### Mandu

These delicious dumplings can come filled with minced meat, seafood or vegetables. They can be either fried, boiled or steamed.



# Ski Resorts & Winter Delights



Whether you are planning to go skiing or simply wish to experience your first snowfall, South Korea has all you could want for a white winter escapade.



## Yongpyong Resort

Receiving an average snowfall of 250 cm per year, Yongpyong Resort has 28 ski slopes, hotel and condominium accommodation, entertainment amenities, a mountain coaster, a water park and more. It was the venue for the Alpine Skiing event at the 2018 Pyeongchang Winter Olympics.

[yongpyong.co.kr](http://yongpyong.co.kr)







### Vivaldi Park

Daemyung Resort's Vivaldi Park Ski World has 12 slopes and can accommodate 20,000 visitors daily. Non-skiers can also get in on the fun at Snowyland, a winter park where they can go sledding. When not on the slopes, kids can check out the amusement rides and indoor electric karts. Vivaldi Park is even located close enough to Seoul to be done as a day trip.

[visitdaemyungresort.com](http://visitdaemyungresort.com)



### Hwacheon Sancheoneo Ice Festival

Touted as one of the four great winter festivals in the world, Hwacheon Sancheoneo Ice Festival brings you to a beautiful world mountains and lakes in January. Activities include ice and bare hand fishing, figure skating, bubble suit game on ice, snow sleighing, ice sledding, bobsleighing, ice soccer and more.

[narafestival.com](http://narafestival.com)



### Skating & Sledding

Other winter activities including ice skating and sledding. In Seoul, the Seoul Plaza Skating Rink, next to City Hall, is a popular skating spot. Look out for sledding hills at locations such as Ttukseom Hangang Park and Korean Children's Center too.

[sselmaejang.com](http://sselmaejang.com)



# Jeju Island Highlights



Korea's largest island is a favourite holiday getaway, even with domestic travellers. Its charms include beautiful beaches, an inspiring volcanic landscape and laid-back island vibe.



Whether by air or sea, visitors arrive at Jeju-si, the island's capital on the northern coast. On the southern coast is the island's second city, Seogwipo, and the Jungmun Resort town, where many tourists stay.

Venture out to the eastern half of Jeju Island to discover natural attractions such as the white sands of Gimnyeong Beach, especially popular with families in the summer, Manjang-gul, the world's longest lava-tube cave system, and the impressive Seongsan Ilchul-bong volcano.

In southern Jeju Island, visit a majestic waterfall to soak in the beauty of nature. Three of the most accessible are Cheonjiyeon and Jeongbang waterfalls, near Seogwipo, and Cheongjeyeon waterfall at the Jungmun Resort area.

On the western end of Jeju Island is the fishing port of Moseulpo. It can serve as a base for those keen to explore the Gapado volcanic island or the Olle walking trails.

Dominating the centre of the island is Hallasan National Park and South Korea's highest peak, the 1,950-metre-tall Halla-san.





## Family-friendly Attractions

Experience the large primitive forest of Gotjawal (part of Mount Halla) on board a 19<sup>th</sup> century Lincoln locomotive at **Eco Land Theme Park**. Chug away on a 4.5 km ride and have fun learning about plants and animals at the themed stations.

**Kimnyoung Maze Park** is a fun stop for families. Bond together as you try to navigate your way through the maze.

**The Teddy Bear Museum** holds an amazing collection of teddy bears. These have been organised into sections based on historic events and notable personalities. If you've never seen a Michael Jackson teddy bear, this is the place to see it. There is even a Louis Vuitton bear which is said to be the world's most expensive teddy bear.

**O'Sulloc Tea Museum** offers a chance to wander about fragrant tea plantations and learn about Korea's traditional tea culture. Pick up some green tea products to bring home at the Tea Store.



Explore five themes amongst the exhibits at **Alive Museum** at Jeju Island. Snap some "impossible" pictures to send to family and friends back home.

Pay a visit to Jeju **Shinhwa World's Theme Park** for rides and attractions set across three zones. Next door is Shinhwa Water Park, the largest water park in Jeju with more than 15 slides and pools.





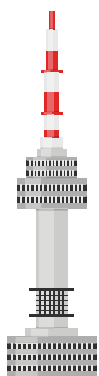
# Sample Itinerary

Planning out your time in Seoul?  
Here is a sample itinerary to help  
get you started.

## 5 Fun-filled Days in Seoul!

### Day 1 Shopping & Popular Spots in Seoul

Visit **Myeongdong** and get to know the neighbourhood. Take the cable car up to **N Seoul Tower** for views from the observatory.

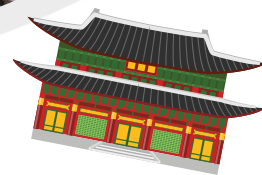


Pay a visit to the **Seoul Animation Center** before making your way to **Dongdaemun** for a spot of shopping before ending your day with a stroll along the **Cheonggyecheon** stream.



### Day 2

### Cultural Experience Day



Immerse yourselves into the Korean culture with a visit to royal palaces. Rent a hanbok and pay a visit to **Bukchon Hanok Village** and the nearby **Changdeokgung** or **Gyeongbokgung** Palaces.

After returning the hanboks, head over to either explore **Tongin Market** or check out the neighbourhood of **Insadong**. Don't forget to make a pit stop at **Tosokchon** near Gyeongbokgung Station, one of the best Hanok style restaurants to enjoy a satisfying bowl of samgyetang (Korean ginseng chicken soup) in Seoul.





Day 3

## Gangnam Style

Visit **Lotte World Adventure & Magic Island** for some fun. End the day with a visit to the **Gangnam district** and **COEX Mall**, the world's largest underground shopping mall.

Day 4

## Theme Park Day

Time to venture out of Seoul. Make a day trip to **Onemount Theme Park** for some fun at its Snow Park and Water Park. Then pedal your way through nature on a **Yangpyeong Rail Bike** or set off on an adventure within the urban cool **Gwangmyeong Cave**.

Alternatively, enjoy the entire day at **Everland**, South Korea's largest theme park in Yongin.



Day 5

## Experience the Outdoors

Ready for a change of pace? Slow down and enjoy the outdoors along the **Han River** at **Yeouido Hangang Park**, or visit the **Children's Grand Park**. Also keep this day for any last-minute shopping or other attractions that you'd want to visit!





# Little Day Out

**BEST of  
Singapore &  
the Region  
for Families**



[littledayout.com](http://littledayout.com)

[littledayout.sg](http://littledayout.sg)

[littledayout](#)

[littledayoutsg](#)





# Acknowledgements



**Little Day Out** is a Singapore-based online magazine providing parents with exciting ideas and on-the-ground stories on the best of Singapore and the region for families. It is the perfect go-to guide, helping families create memories that last a lifetime. Since going 'live' in August 2012, Little Day Out has attracted a loyal readership of parents, educators and kid-lovers by word of mouth because they all believe in having a great little day out!

Little Day Out is published by Big Little Company Pte. Ltd.



The **Korea Tourism Organization (KTO)** is a national tourism board for Korea under the Ministry of Culture, Sports and Tourism. Since 1962, the organization is commissioned to promote and develop Korea's tourism industry.

It champions Korea's tourism sector in four major fields; promotes Korea as an attractive travel destination, develops Korea's travel attractions and products, studies and researches on tourism statistics and strategies, educate and train tourism professionals.

**[littledayout.com](http://littledayout.com)**

**[visitkorea.or.kr](http://visitkorea.or.kr)**

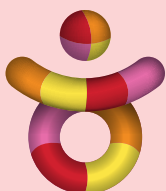
Produced by  
**Big Little Company Pte. Ltd.**

Commissioned by and in partnership with  
**Korea Tourism Organization**

Images  
© **Korea Tourism Organization** and © **Big Little Company Pte. Ltd.**

Year 2020 Edition

Copyright © Big Little Company Pte. Ltd., all rights reserved. No material may be reproduced in part or in whole by any means without prior written consent from Big Little Company Pte. Ltd. and KTO. All information is correct at the time of publication. Whilst every reasonable care has been taken to ensure the accuracy and objectivity of the information provided in this publication, errors and omissions may occur and we do not accept any liability in respect of them.



KOREA  
TOURISM  
ORGANIZATION

